

Leishmaniasis

MOROCCO

2014

Published in July 2016

Country General Information (WHO, 2013)

Total population:	33,008,000	Age group <15/>14 years, %:	28% / 72%
Gender (% F/M):	50.6% / 49.4%	Life expectancy at birth in years (F/M):	73 / 69
GDP (PPP int \$):	7000	Number of 2nd sub-national administrative level divisions, name:	75, Province
Income status:	Lower middle		

Epidemiology

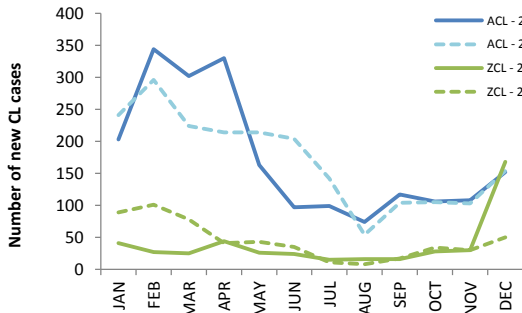
	VL	ACL	ZCL	MCL
Endemicity status:	Endemic	Endemic	Endemic	Non endemic
Number of new cases (incidence):	86	2095	460	N/A
Number of relapse cases:	0	0	0	N/A
Total number of cases:	86	2095	460	N/A
Imported cases (n, %):	1 1%	0 0%	0 0%	No data
Gender distribution (% F):	51%	55%	55%	N/A
Age group distribution (% <5/5-14/>14):	(72/19/9)	(36/32/32)	(25/34/41)	N/A
Incidence rate (cases/10 000 population in endemic areas):	0.91	6.16	3.88	N/A
Number of endemic 2nd sub-national administrative level divisions (n):	90	292	82	N/A
Population at risk ¹ (% n/total):	10% (3174300/33008000)	10% (3400100/33008000)	4% (1185200/33008000)	N/A
Was there any outbreak?	No	Yes	Yes	N/A
Number of new ² foci:	0	1	1	N/A

N/A = not applicable VL = visceral leishmaniasis ACL = anthroponotic cutaneous leishmaniasis ZCL = zoonotic cutaneous leishmaniasis MCL = mucocutaneous leishmaniasis

Monthly distribution of new cases January-December

2014	JAN	FEB	MAR	APR	MAY	JUN	JUL	AUG	SEP	OCT	NOV	DEC
VL	3	6	8	12	11	8	7	4	13	5	7	2
ACL	203	344	302	330	163	97	99	74	117	106	108	152
ZCL	41	27	25	44	26	24	15	16	16	28	30	168

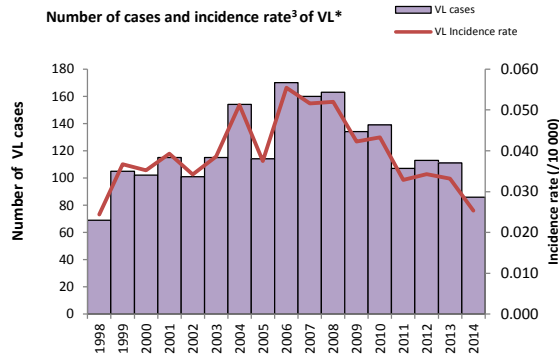
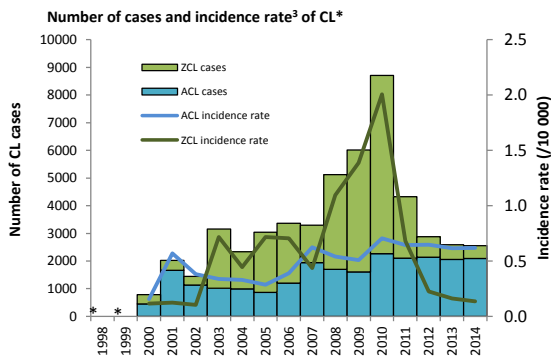
Number of new CL cases reported by month in 2013 and 2014



Number of new (primary) VL cases reported by month in 2013 and 2014



Incidence rate/10 000 population and number of new CL (left) and new (primary) VL (right) cases from 1998 to 2014



¹ Defined as "Number of people living in 3rd sub-national administrative level endemic areas"

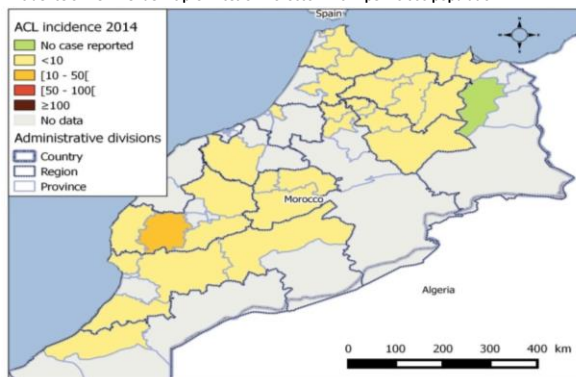
* No data available

² For this reporting period, an area at the 3rd sub-national administrative level reporting cases for the first time ever

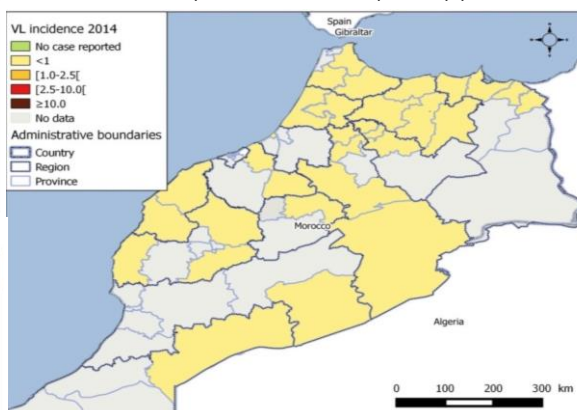
³ Incidence rate at the national level

Distribution of new CL (left) and new (primary) VL (right) cases

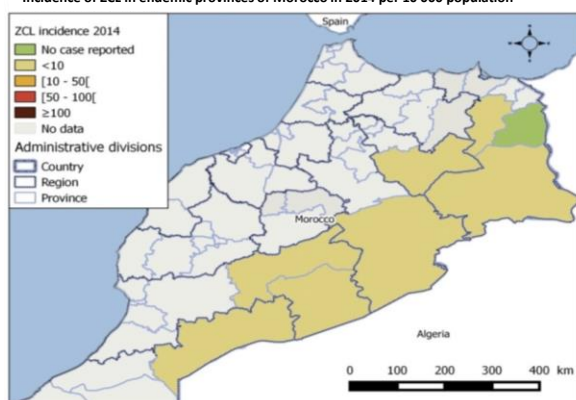
Incidence of ACL in endemic provinces of Morocco in 2014 per 10 000 population



Incidence of VL in endemic provinces of Morocco in 2014 per 10 000 population



Incidence of ZCL in endemic provinces of Morocco in 2014 per 10 000 population



The boundaries and names shown and the designations used on this map do not imply the expression of any opinion whatsoever on the part of the World Health Organization concerning the legal status of any country, territory, city or area or of its authorities, or concerning the delimitation of its frontiers or boundaries. Dotted and dashed lines on maps represent approximate border lines for which there may not yet be full agreement.
Map production: WHO/HTM/NTD/IDM

Control and surveillance

Year Leishmaniasis National Control Programme (LNCP) was established:	1997	Year latest national guidelines were published:	2010
Type of surveillance:	Integrated	Is leishmaniasis a notifiable disease (mandatory reporting)?	Yes
Is there a vector control programme?	Yes	Is there a reservoir host control programme?	Yes
Type of insecticide used for IRS:	Pyrethroids	Number of leishmaniasis health facilities:	35

Diagnosis

	VL	ACL	ZCL	MCL
Number of people screened actively for:	0	792455	371346	N/A
Number of people screened passively for:	86	1710625	1130510	N/A
VL cases diagnosed by RDT* (%, # RDT+/total VL cases):	0% (0/86)	N/A	N/A	N/A
Proportion of positive RDT* (%, # RDT+/total RDT):	N/A (0/0)	N/A	N/A	N/A
Cases diagnosed by direct exam (parasitology) (% , # slides +/total cases):	100% (86/86)	85% (1779/2095)	33% (150/460)	N/A
Proportion of positive slides (%, # slides +/total slides):	100% (86/86)	36% (1779/4902)	31% (150/489)	N/A
Cases diagnosed clinically (%, # clinical cases/total cases):	0% (0/86)	15% (316/2095)	67% (310/460)	N/A
Percentage of cases with HIV-VL coinfection:	0% (0/86)	N/A	N/A	N/A

* These indicators apply only for new (primary) VL cases

VL = visceral leishmaniasis

ACL = anthroponotic cutaneous leishmaniasis

ZCL = zoonotic cutaneous leishmaniasis

N/A = not applicable

RDT = rapid diagnostic test

HIV = human immunodeficiency virus

MCL = mucocutaneous leishmaniasis

Treatment and medicines

Is treatment provided free of charge in the public sector?	Yes
Antileishmanial medicines included in the national List of Essential Medicines:	Meglumine antimoniate

TREATMENT OUTCOME

VL

Proportion of relapse cases: ⁴	0% (0/86)
Initial cure rate:	100% (86/86)
Failure ⁵ rate:	No data
Case-fatality rate:	2% (2/86)

⁴ A relapse case in this country is defined as: No definition available

⁵ A failure case in this country is defined as: No definition available